

Research & Analysis

A service of the division of Strategic Planning & Analysis, Institutional Research, Management Information Systems and Grants, February 2009

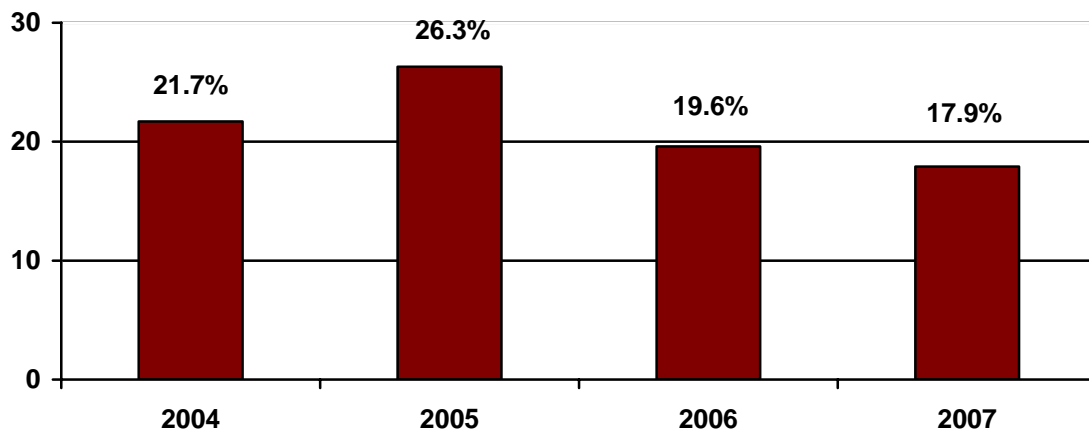
REMEDIAL ENROLLMENT ACTIVITY OF BRIGHT FUTURES SCHOLARSHIP RECIPIENTS

In 1997, the Florida Legislature created the Florida Bright Futures Scholarship Program. This Florida Lottery-funded scholarship rewards students for their academic achievements during high school by providing funding for them to pursue postsecondary educational and career goals in Florida. The eligibility requirements include GPA thresholds and course requirements to prepare students for success in college.

This brief provides a glimpse into the extent to which Bright Futures (BF) recipients enroll in remedial course work (a.k.a. developmental or college preparatory) at Hillsborough Community College (HCC). For this inquiry, the cohort tracked consists of BF recipients matriculating to HCC in the fall and enrolling full-time. HCC is their first college of enrollment; thus they are designated as *First Time in College* or FTIC.

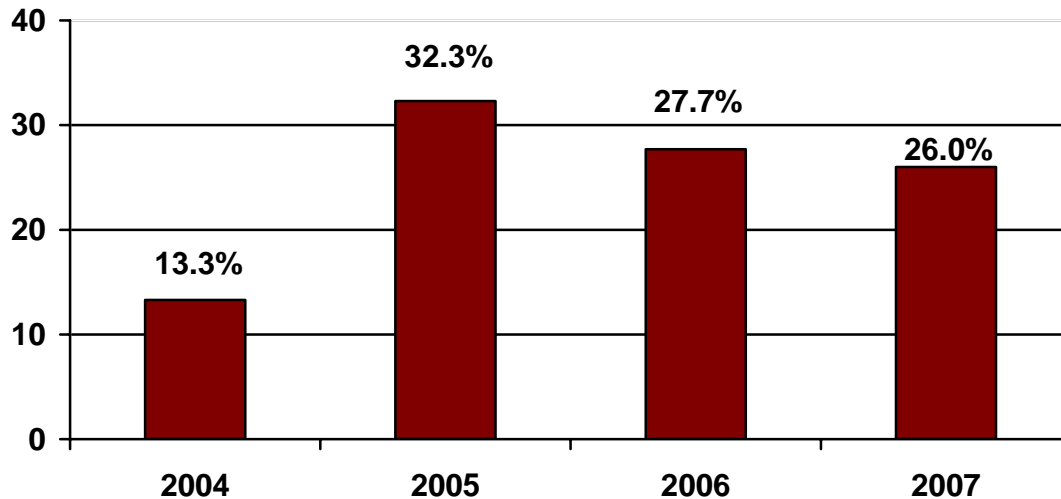
For the fall 2007 cohort, 18% of Bright Futures Scholars placed into developmental education – either math, reading, writing or a combination of the three – by virtue of their entry level testing scores on the CPT, ACT, SAT, or EACT exams. The graph below displays the proportion of BF Scholars placing into developmental for four fall cohorts.

Percentage of Bright Futures Recipients Placing into Remediation, Falls 2004 - 2007



Of the fall 2007 BF Scholars placing into remedial education, 26% successfully completed all remedial course work by fall 2008. The chart below reflects the percentages of those completing all remedial course work one year later for all four cohorts examined. The data below do not reflect those placing out of remediation by way of a state exit exam following completion of a portion of their developmental courses.

**Percentage of Bright Futures Recipients
Successfully Completing all Remedial Course Requirements
One Year Later, Fall Cohorts 2004 - 2007**



Although portions of Bright Futures recipients are placing into remedial education, metrics do indicate a consistently higher level of performance among BF recipients compared to the remainder of the full-time FTIC cohort. The table below compares the performance of full-time FTICs receiving the BF scholarship vs. all others on the following metrics:

1. GPA on non-remedial coursework after one year;
2. % of credit hours earned of those attempted for non-remedial coursework after one year; and
3. % retained (fall to fall).

**Performance of Full-Time FTIC Students One Year After Matriculating,
Bright Futures Scholars Compared to All Others, Falls 2004 - 2007**

	Fall 2004		Fall 2005		Fall 2006		Fall 2007	
	BF	All Others	BF	All Others	BF	All Others	BF	All Others
Population size	207	1,286	236	1,234	244	1,215	431	1,255
GPA	2.8	2.5	2.9	2.6	2.9	2.6	3.0	2.6
% Hours Earned/ Hours Attempted	87.1	80.3	89.7	80.1	88.2	80.0	90.6	80.5
% Retained (fall to fall)	76.8	60.8	72.0	60.6	77.9	65.7	78.0	64.9

Paul Nagy, Newton Beardsley, Dru Clark, Liza Stewart
Hillsborough Community College
39 Columbia Drive
Tampa, FL 33606