

# Lower Division Accountability, 2008

## *Five-Year Summary of Statewide Performance on Accountability Measures for The Florida College System<sup>1</sup>*

Florida statutes direct the State Board of Education to provide for the “systematic, ongoing improvement and assessment of the improvement of the quality and efficiency of the Florida community colleges.”<sup>2</sup> This FYI helps meet that requirement by providing state-level results for The Florida College System’s (FCS) lower division accountability measures over a five-year period. The accountability measures fall into five areas: (1) Retention and Success Rates; (2) Performance of Associate of Arts (AA) transfer students in the State University System (SUS); (3) Placement of Vocational Program completers; (4) Success Rates of students in college preparatory reading, writing, and mathematics; and (5) Student performance on the College Level Academic Skills Test (CLAST) or CLAST Alternative. The specific definitions for each measure are:<sup>3</sup>

- **Outcome Measure 1, Part 1: High School Continuation.** High school continuation is measured by the percentage of high school graduates who enroll in The Florida College System within a year of graduation.
- **Outcome Measure 1, Part 2: Retention and Success.** Retention and success are measured separately for First-Time in College (FTIC) students in Associate of Arts programs, Applied Associate of Science (AAS) programs, and Post-Secondary Vocational Certificates (PSVC). To be included in the measure, students in AA and AAS programs must have completed 18 credit hours and students in PSVC programs must have completed at least 9 credit hours. Retention and success rates were calculated using the following formulas:
  - Retention Rate = (Number of students who have graduated + number of students who are enrolled and in good academic standing + number of students who are enrolled and who are not in good academic standing) divided by the number of students in the cohort pool.
  - Success Rate = (Number of students who have graduated + number of students who are enrolled and in good academic standing + number of students who have left the institution in good academic standing) divided by the number of students in the cohort pool.
- **Outcome Measure 2: AA Degree Transfer Performance in the SUS.** This measure is defined as the percentage of AA students who transfer to a state university and have a Grade Point Average (GPA) of 2.5 or above.

---

<sup>1</sup> The years covered by this report are 2004 through 2008. These reflect the year of the accountability report and not the academic year of the measure. For example, the 2008 accountability report for Measure 2 is based on the 2005-06 reporting year.

<sup>2</sup> Section 1008.45, Florida Statutes, “Community college accountability process.”

<sup>3</sup> More detailed information can be found in Accountability 2008 Selection Criteria, v.1.0, Florida College System, Community College and Technical Center MIS (CCTCMIS), Annual Reports Workshop, 2008.

- **Outcome Measure 3, Part 2: Placement of Vocational Program Completers.**<sup>4</sup> This measure is defined as the percentage of students who completed a Postsecondary Vocational Certificate and were employed in a job related to their program.
- **Outcome Measure 4: Success Rates of Students in College Preparatory Reading, Writing, and Mathematics.**
  - College Preparatory Success – The number of degree-seeking students who passed the highest level college preparatory course for each subtest (reading, writing, and math).
  - College Preparatory Retention and Success Rates (AA degree seeking students) – Degree seeking student who completed at least 18 college credits during the tracking period and who completed all college preparatory requirements.
    - Retention Rate = (Number of students who have graduated + number of students who are still enrolled and are in good academic standing + number of students who are enrolled but not in good academic standing) divided by the number of students in the cohort pool.
    - Success Rate = (Number of students who have graduated + number who are still enrolled and are in good academic standing + number of students who left the institution in good academic standing) divided by the number of students in the cohort pool.
- **Outcome Measure 5: College-Level Academic Skills Performance.** This measure is defined as the percentage of students who passed the CLAST after completing 60 or more college credit hours. The performance results are presented for three categories: (1) College preparatory student performance; (2) Non-college preparatory student performance; and (3) Total student performance (aggregate of college preparatory and non-college preparatory students).

For more information, including the data sources and date range for each measure, see the Appendix.

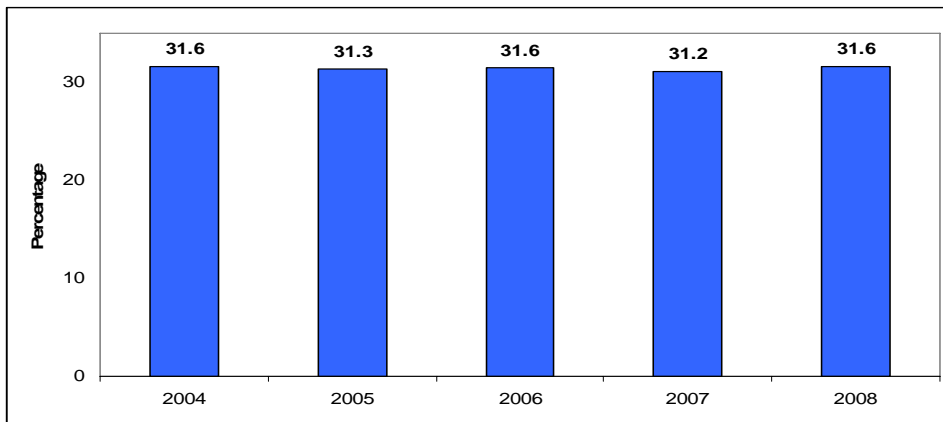
---

<sup>4</sup> The data for measure 3, part 1: the state licensure pass rate is no longer provided by each individual licensing agency and therefore cannot be included in this report.

## Accountability Measure Results

Exhibit 1 shows the percentage of all high school graduates statewide who enrolled in The Florida College System within a year of graduating high school. It should be noted that although colleges can reach out to students through marketing and advertising, they cannot directly influence enrollment. Even so, this measure has remained stable over the past five years, at just under 32%.

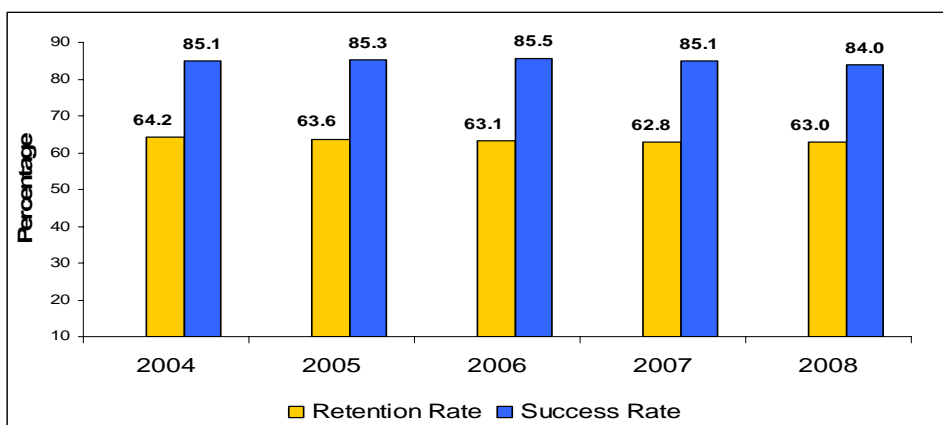
**EXHIBIT 1: THE PERCENTAGE OF HIGH SCHOOL GRADUATES ENROLLING IN THE FLORIDA COLLEGE SYSTEM**



SOURCE: DIVISION OF COMMUNITY COLLEGES AND COMMUNITY COLLEGE AND TECHNICAL CENTER MIS

Exhibit 2 shows the retention and success rates for AA students from 2004 to 2008 (Measure 1, part 2). The retention rate for AA students remained stable from 2004 to 2008. In 2004, 64.2% of AA students were retained in the system and in 2008 that figure was 63%. Success rates for AA students have also been steady. Between 2004 and 2007, the success rate remained about 85%, while there was a slight change in 2008 when the success rate changed to 84%.

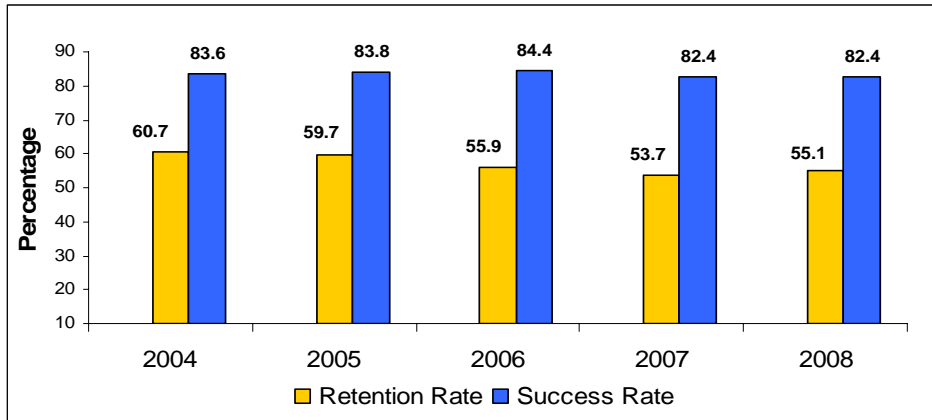
**EXHIBIT 2: RETENTION AND SUCCESS RATES FOR ASSOCIATE OF ARTS STUDENTS**



SOURCE: DIVISION OF COMMUNITY COLLEGES AND COMMUNITY COLLEGE AND TECHNICAL CENTER MIS

Exhibit 3 shows the retention and success rates for AS and AAS students. The retention rate for these students decreased from 60.8% in 2004 to 55.1% in 2008. The success rates for AS and AAS students were 83.6% in 2004 and 82.4% in 2008. Overall, the success rates for this group of students have been fairly high and relatively stable over the past five years.

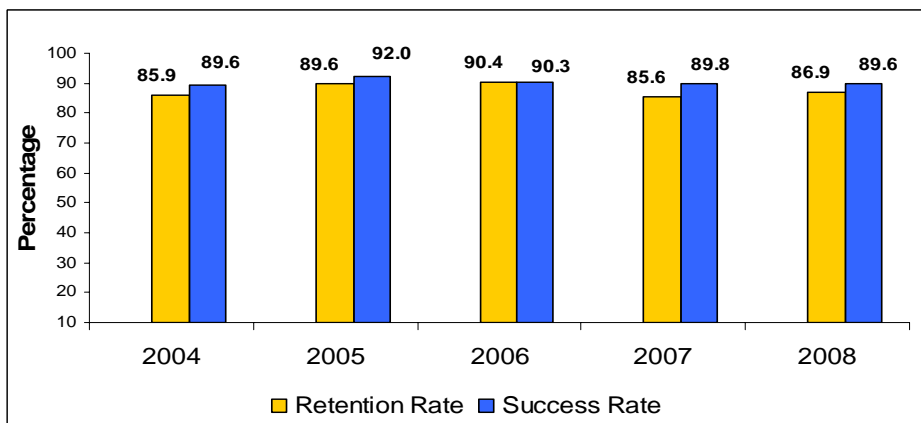
**EXHIBIT 3: RETENTION AND SUCCESS RATES FOR ASSOCIATE OF SCIENCE AND ASSOCIATE OF APPLIED SCIENCE STUDENTS**



SOURCE: DIVISION OF COMMUNITY COLLEGES AND COMMUNITY COLLEGE AND TECHNICAL CENTER MIS

Exhibit 4 shows the retention and success rates for PSVC students. These programs tend to be short and are focused on specific career training and skills. Consequently, the results are significantly higher than those shown in Exhibits 1 and 2. The retention rates in 2004 and 2008 were 85.9% and 86.9%, respectively. Success rates for PSVC students were 89.6% in both 2004 and 2008. Over the five-year period, both the retention and success rates have remained stable.

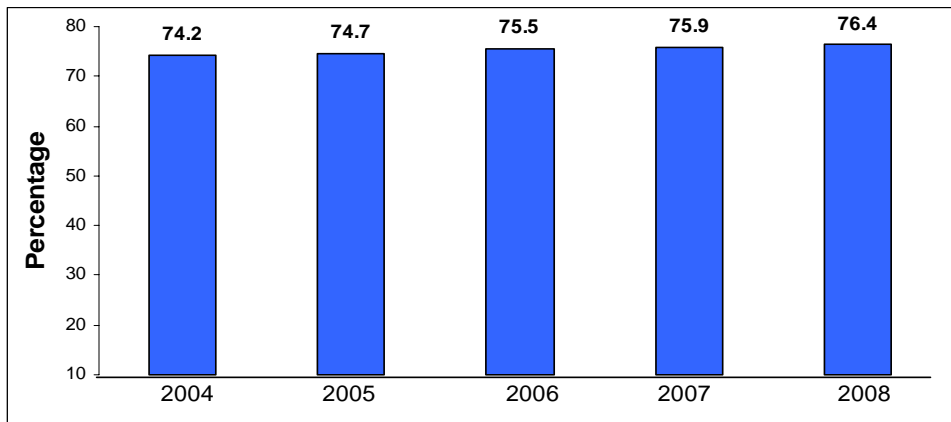
**EXHIBIT 4: RETENTION AND SUCCESS RATES FOR POST-SECONDARY VOCATIONAL CREDENTIAL STUDENTS**



SOURCE: DIVISION OF COMMUNITY COLLEGES AND COMMUNITY COLLEGE AND TECHNICAL CENTER MIS

Exhibit 5 shows the percentage of AA students who successfully transferred to a state university. In 2004, 74.2% of AA transfer students maintained a 2.5 GPA, and this increased to 76.4% in 2008. In a separate report, *Zoom 2009-01: Statewide Articulation Agreement – Effective and Comprehensive*, the Division of Community Colleges found that AA students transferring to a state university have grade point averages similar to students who started at a state university.<sup>5</sup>

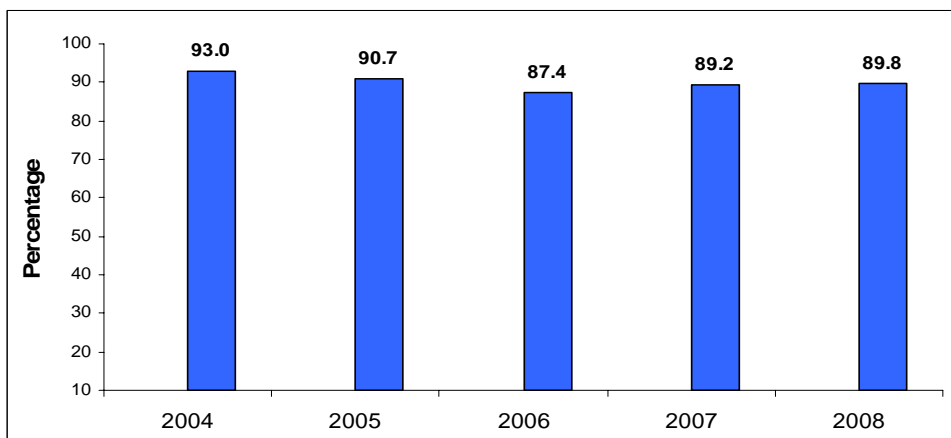
**EXHIBIT 5: PERCENTAGE OF AA TRANSFER STUDENTS WITH A 2.5 GPA AND ABOVE**



SOURCE: DIVISION OF COMMUNITY COLLEGES AND COMMUNITY COLLEGE AND TECHNICAL CENTER MIS

Exhibit 6 shows the percentage of students who completed Vocational Programs at schools in The Florida College System and were placed into jobs in their field. This declined from 2004 to 2006 but has increased over the past two years, reaching roughly 90%.

**EXHIBIT 6: PERCENTAGE OF STUDENTS COMPLETING VOCATIONAL PROGRAMS PLACED IN THEIR FIELDS**

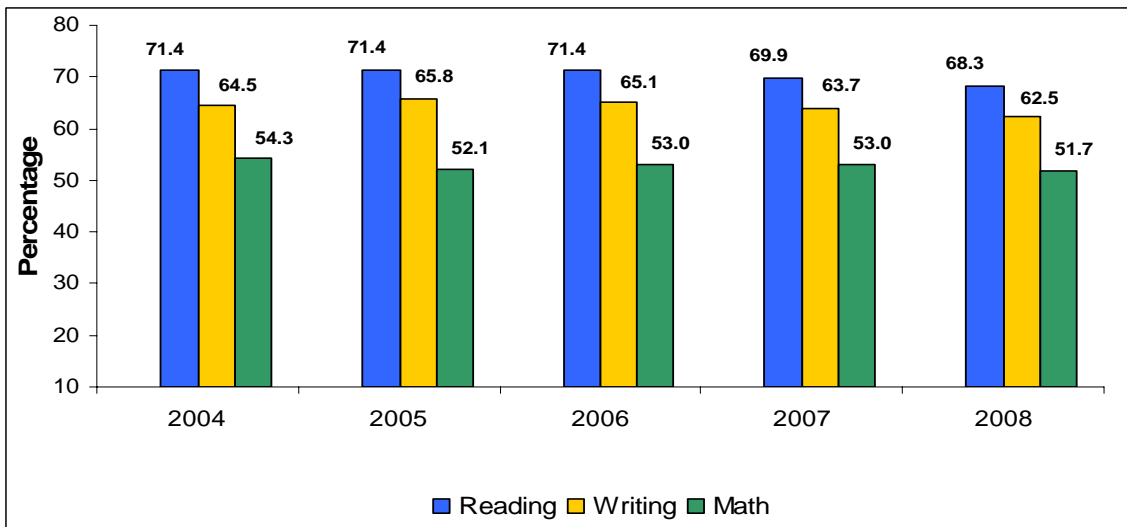


SOURCE: DIVISION OF COMMUNITY COLLEGES AND COMMUNITY COLLEGE AND TECHNICAL CENTER MIS

<sup>5</sup> A copy of this report can be found at: <http://www.fldoe.org/cc/OSAS/Evaluations/zoom.asp>

The success rates for Florida college students in college preparatory courses (reading, writing, and math) are shown in Exhibit 7. Reading courses have the highest success rates, followed by writing and then math. Over the past five years, the percentage of students who were successful has fluctuated, but declined slightly in the last two years. This may be a result of the significant increases in student enrollments as displaced workers have returned to the community colleges for education and training.

**EXHIBIT 7: COLLEGE PREPARATORY SUCCESS RATES**



SOURCE: DIVISION OF COMMUNITY COLLEGES AND COMMUNITY COLLEGE AND TECHNICAL CENTER MIS

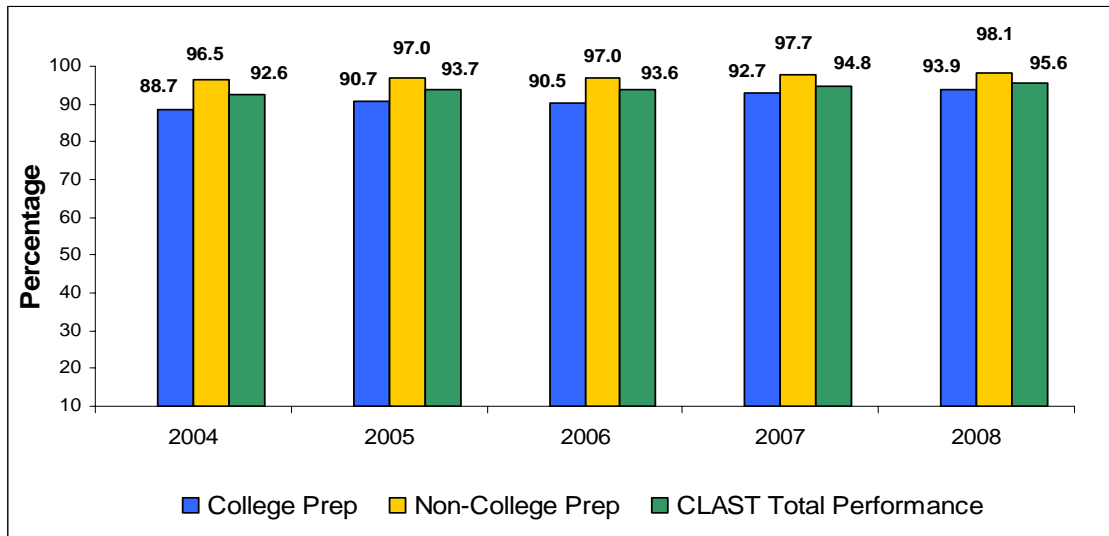
The retention and success rates for degree-seeking students who took college preparatory courses are illustrated in Exhibit 8. The retention rate for students who completed college preparatory courses remained stable at about 67% in both 2004 and 2008. The success rates for these students also remained about the same, at 85.9% in 2004 and 85.1% in 2008.

**EXHIBIT 8: RETENTION AND SUCCESS RATES FOR STUDENTS TAKING COLLEGE PREPARATORY COURSES**



SOURCE: DIVISION OF COMMUNITY COLLEGES AND COMMUNITY COLLEGE AND TECHNICAL CENTER MIS

Florida College System student performance on the CLAST (or CLAST alternative) is shown in Exhibit 9. The results are broken out by students who took the highest level of college preparatory courses and those who did not need college preparatory courses. The performance of students who successfully completed the highest level college preparatory classes improved from 88.7% in 2004 to 93.9% in 2008. Similarly, the performance of students who did not have to take college preparatory courses improved from 96.5% in 2004 to 98.1% in 2008. Overall, FCS student performance on the CLAST continues to stay strong. In 2004, 92.6% of students passed the CLAST; the proportion of students who passed in 2008 increased to 95.6%.

**EXHIBIT 9: PERCENTAGE OF STUDENTS PASSING THE CLAST OR CLAST ALTERNATIVE**


SOURCE: DIVISION OF COMMUNITY COLLEGES AND COMMUNITY COLLEGE AND TECHNICAL CENTER MIS

***For more information please contact:***

Dr. Kathyrine Scheuch, Deputy Director of Research

[Kathyrine.Scheuch@fldoe.org](mailto:Kathyrine.Scheuch@fldoe.org)

(850) 245-9456

Dr. John Hughes, Associate Vice Chancellor for Evaluation

[John.Hughes@fldoe.org](mailto:John.Hughes@fldoe.org)

(850) 245-9482



Florida Department of Education

Florida Department of Education  
 Dr. Eric J. Smith, Commissioner

The Florida College System  
 Dr. Willis N. Holcombe, Chancellor  
 Dr. Judith Bilsky, Executive Vice Chancellor

Phone: (850) 245-0407  
 325 West Gaines Street, Suite 1314  
 Tallahassee, Florida 32399-0400  
[www.fldoe.org/cc/](http://www.fldoe.org/cc/)

### Appendix –Data Collection Periods for each Accountability Measure

	2004	2005	2006	2007	2008
<b>Measure 1, Part 1: High School Continuation to Community Colleges</b>	Tracking Period: 2002- 03 for 2001-02 High School Graduates	Tracking Period: 2003- 04 for 2002-03 High School Graduates	Tracking Period: 2004- 05 for 2002-03 High School Graduates	Tracking Period: 2005- 06 for 2003-04 High School Graduates	Tracking Period: 2006- 07 for 2004-05 High School Graduates
Continuation Rate	31.6	31.3	31.6	31.2	31.6
<b>Measure 1, Part 2: Retention and Success for AA Students</b>	Tracking period: Fall 2000-01 through Winter/Spring 2003-04	Tracking period: Fall 2001-02 through Winter/Spring 2004-05	Tracking period: Fall 2002-03 through Winter/Spring 2005-06	Tracking period: Fall 2003-04 through Winter/Spring 2006-07	Tracking period: Fall 2004-05 through Winter/Spring 2007-08
AA Retention Rate	64.2	63.6	63.1	62.8	63.0
AA Success Rate	85.1	85.3	85.5	85.1	84.0
<b>Measure 1, Part 2: Retention and Success for AS and AAS Students</b>	Tracking period: Fall 2000-01 through Winter/Spring 2003-04	Tracking period: Fall 2001-02 through Winter/Spring 2004-05	Tracking period: Fall 2002-03 through Winter/Spring 2005-06	Tracking period: Fall 2003-04 through Winter/Spring 2006-07	Tracking period: Fall 2004-05 through Winter/Spring 2007-08
AAS & AS Retention Rate	60.7	59.7	55.9	53.7	55.1
AAS & AS Success Rate	83.6	83.8	84.4	82.4	82.4
<b>Measure 1, Part 2: Retention and Success for PSVC Students</b>	Tracking period: Fall 2000-01 through Summer 2002- 03	Tracking period: Fall 2001-02 through Summer 2003- 04	Tracking period: Fall 2002-03 through Summer 2004- 05	Tracking period: Fall 2003-04 through Summer 2005- 06	Tracking period: Fall 2004-05 through Summer 2006- 07
PSVC Retention Rate	85.9	89.6	90.4	85.6	86.9
PSVC Success Rate	89.6	92.0	90.3	89.8	89.6
<b>Measure 2: AA Transfers to SUS with GPA over 2.5</b>	AA earned in 2001-02; Transferred to SUS - 2002-03	AA earned in 2002-03; Transferred to SUS - 2003-04	AA earned in 2003-04; Transferred to SUS - 2004-05	AA earned in 2004-05; Transferred to SUS - 2005-06	AA earned in 2005-06; Transferred to SUS - 2006-07
Percent GPA 2.5+	74.2	74.7	75.5	75.9	76.4

	2004	2005	2006	2007	2008
<b>Measure 3, Part 2: Placement of Vocational Program Completers</b>	2001-02 Completers and Leavers (the AA2 follow-up file)	2002-03 Completers and Leavers (the AA2 follow-up file)	2003-04 Completers and Leavers (the AA2 follow-up file)	2004-05 Completers and Leavers (the AA2 follow-up file)	2005-06 Completers and Leavers (the AA2 follow-up file)
Percent Placed in Field	93.0	90.7	87.4	89.2	89.8
<b>Measure 4, Part 1: Success in College Prep Courses</b>	Passed highest level between Fall 2001-02 and Summer 2003-04	Passed highest level between Fall 2002-03 and Summer 2004-05	Passed highest level between Fall 2003-04 and Summer 2005-06	Passed highest level between Fall 2004-05 and Summer 2006-07	Passed highest level between Fall 2005-06 and Summer 2007-08
Reading Percent	71.4	71.4	71.4	69.9	68.3
Writing Percent	64.5	65.8	65.1	63.7	62.5
Math Percent	54.3	52.1	53.0	53.0	51.7
<b>Measure 4, Part 2: Retention and Success for Students in College Prep Courses</b>	Tracking period: Fall 2000-01 through Winter/Spring 2003-04	Tracking period: Fall 2001-02 through Winter/Spring 2004-05	Tracking period: Fall 2002-03 through Winter/Spring 2005-06	Tracking period: Fall 2003-04 through Winter/Spring 2006-07	Tracking period: Fall 2004-05 through Winter/Spring 2007-08
Retention Rate	67.1	66.0	67.4	66.2	66.9
Success Rate	85.9	86.2	87.2	86.4	85.1
<b>Measure 5: Performance on CLAST or CLAST Alternative</b>	In Student Data Base in 2003; scores prior to September 2003	In Student Data Base in 2004; scores prior to September 2004	In Student Data Base in 2005; scores prior to September 2005	In Student Data Base in 2006; scores prior to September 2006	In Student Data Base in 2007; scores prior to September 2007
Students requiring College Prep	88.7	90.7	90.5	92.7	93.9
Students not requiring College Prep	96.5	97.0	97.0	97.7	98.1
All Students	92.6	93.7	93.6	94.8	95.6

SOURCE: DIVISION OF COMMUNITY COLLEGES AND COMMUNITY COLLEGE AND TECHNICAL CENTER MIS.