

# EVACUATION PLAN HILLSBOROUGH

Community College

## Site: 6 Brandon Campus Site Plan

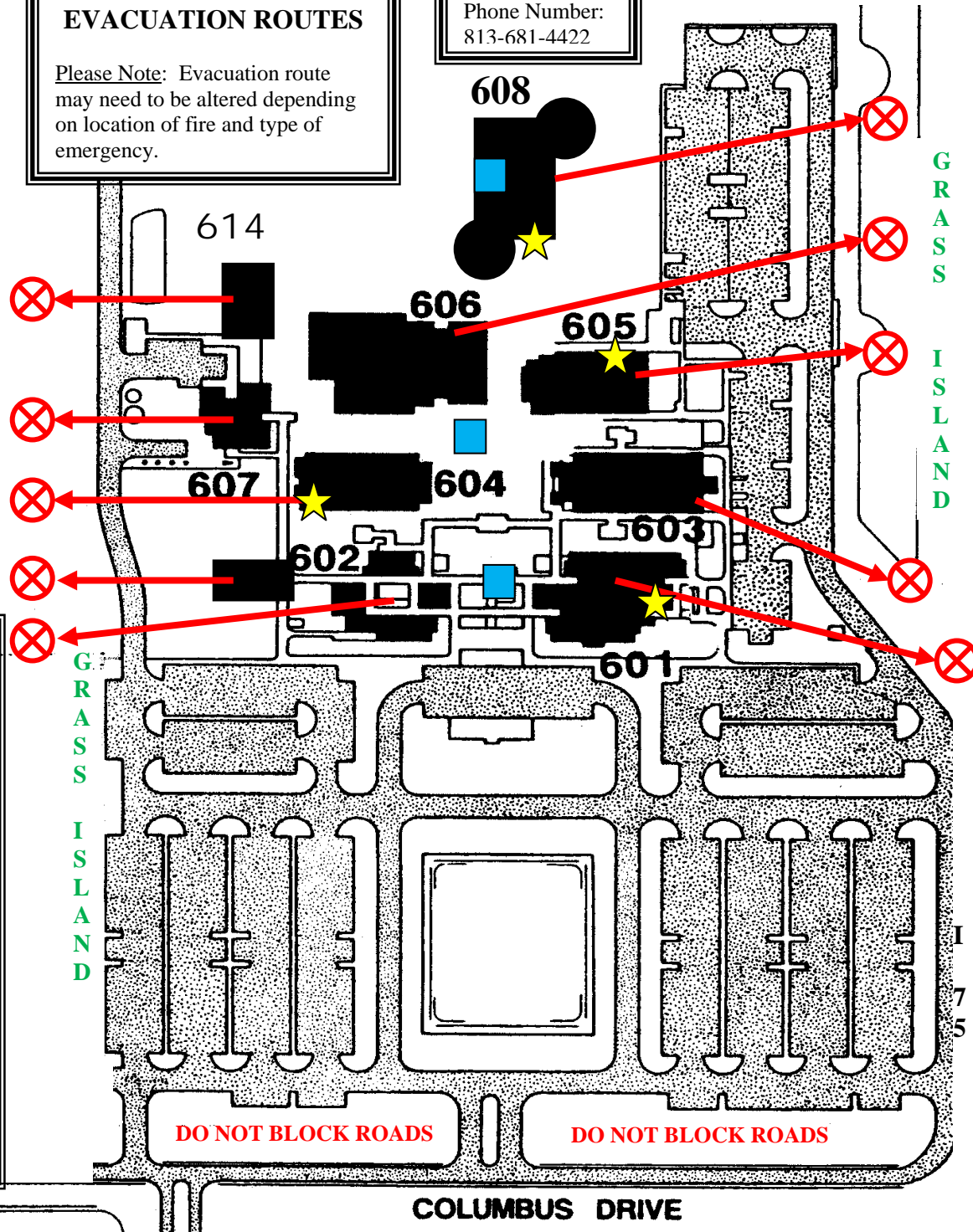


- 601=Science Building
- 602=Administration Building
- 603=Academic Building
- 604=Humanities Building
- 605=Technology Building
- 606=Library Building
- 607=Physical Plant
- 608=Student Services Building
- 614=District Central Receiving Warehouse

**SUGGESTED EVACUATION ROUTES**

Please Note: Evacuation route may need to be altered depending on location of fire and type of emergency.

Fire Department  
Phone Number:  
813-681-4422



### IMPORTANT EVACUATION PROCEDURES

- (1) When leaving the room, take all personal belongings with you.
- (2) Stay with your class and move in an orderly fashion to the designated assembly point for your building (see map).
  - In the event of: a fire move out 300 ft., a bomb threat move 500 ft. or for an active shooter move out 1000 ft.
- (3) Do not block or travel on roadways.
- (4) Stay at the assembly point until Security gives the "all clear" to return to campus. Do not leave campus; cars leaving campus may impede emergency vehicles arriving on campus.
- (5) Do not smoke during the evacuation procedure.
- (6) Individuals who cannot negotiate the stairs, should report to one of the designated **Emergency Rescue Areas** (see map) and remain there until given the "all clear" by Security.

### IN THE EVENT OF A TORNADO OR HURRICANE:

Evacuate to the closest concrete stairwell in your building.

- = Assembly Point
- = Emergency Rescue Area (2<sup>nd</sup> Floor Concrete Stairwell)
- = Elevator