

## 2001-2002 ACCOMPLISHMENTS

During the 2001-2002 fiscal year, following the guidance provided by the Board Goals, HCC focused resources upon creating success for our students, with attention to special needs of our employees and our communities. Quality service and success remained the priority during the months the College struggled with budget reductions. Highlights of some of the successes are:

### STUDENTS

Improved support: opened childcare services; improved telephone registration; corrected billing processes.

Increased access: offered new programs and certificates.

Increased enrollment and increased diversity.

Increased student performance in numbers of completers, transfers, graduates and employment in high skill and wage jobs.

Enhanced student access (programmatic, financial and geographical).

### THE COLLEGE FACULTY AND STAFF

Added faculty and staff members to support existing programs and to establish new programs.

Increased focus on internal communications; first annual College Day, campus open talk meetings with the President; calendars and email to share events and information; use of public folders and the WEB.

Improved facilities through planned maintenance and remodeling projects on all campuses and the District offices.

### PARTNERSHIPS

Continued cooperation and support activities with established partners such as service clubs, hospitals, Chambers, and Leadership programs, etc.

Community: New partnership activities include the Drew Park redevelopment efforts; the HCC Sun City educational site; the Plant City Campus/city joint-use community center.

Education: New partnerships with other academic institutions include the University of Florida Agriculture program with the Plant City Campus and the University of Florida

Dental program with the Dale Mabry Campus.

## FACILITIES

Modernized elevators at the Ybor City and Dale Mabry Campuses.

New elevators (required from lightening strike) the District Administrative Offices.

Survey of the condition and recommendations on all roofs (42 buildings) in the District: Roofs replaced to date, District Administrative Office and Brandon Campus.

Stairs replaced – Brandon Campus.

Exterior renovation replacing wood trim on buildings and removal of covered walks at the Plant City Campus.

Remodel and carpet replacement of the Florida Studies Building, Plant City Campus.

Demolition of the plant on the Borden property at the Dale Mabry Campus.

Completion of the joint College-student project – eCafe at the Dale Mabry Campus.

Opened childcare center at the Dale Mabry Campus.

### Projects Underway:

Faculty building remodel and new roof at the Ybor City Campus.

Historical preservation and remodel of the LaBenefica Building for early childhood development lab and dance program (2nd floor) at the Ybor City Campus.

Renovation of dark room facility and upgrade of toilets in the Library Building at the Ybor City Campus.

Joint Plant City/City of Plant City project for a community center with College use at the Plant City Campus.

Palm Avenue Parking Garage at the Ybor City Campus

The budget for facilities remodeling and renovation is shown below:

### Facilities remodeling/renovation Appropriations budget for five years

Year	Facilities Budget
1997/98	\$4,189,917
1998/99	\$3,251,144
1999/00	\$1,670,215
2000/01	\$4,113,326
2001/02	\$5,305,548

## ENROLLMENT

After a decline in 1998/99, enrollment at the College has shown a positive trajectory. Internal enrollment goals were surpassed in both 1999/00 and 2000/01 under Dr. Stephenson's leadership. For the 2001/02 year, year-to-date FTE suggest that growth will once again be greater than the enrollment goals.

The table below shows the FTE values, the annual FTE difference, and the difference as a percentage.

### HCC FTE for five years

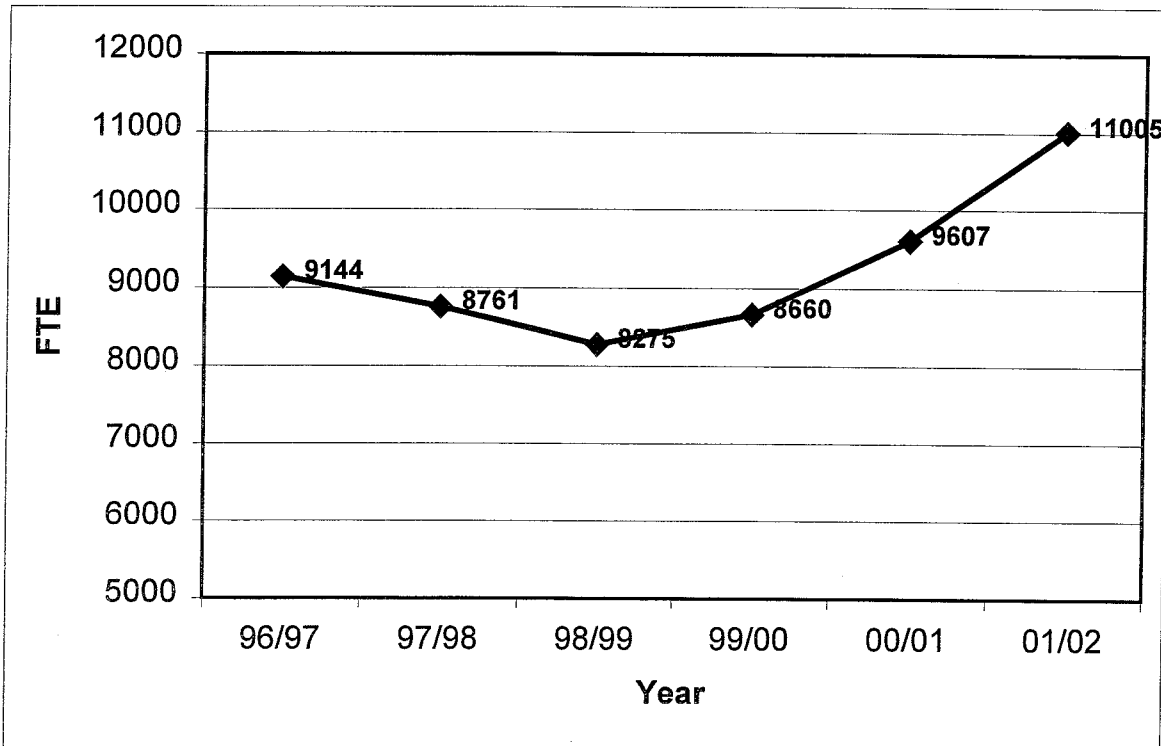
Year	FTE	Difference from previous year	Difference as %
1997/98	8,746		
1998/99	8,275	-471	-5.4
1999/00	8,660	+385	+4.7
2000/01	9,607	+947	+10.9
2001/02	11,005*	+1,398	+14.6

\*Year-to-date values.

The 2001/02-year is still in progress; end of year values may vary slightly.

The enrollment trend is illustrated in the following graphic:

### HCC FTE values for six years



The 2001/02-year is still in progress, end of year values may vary slightly.

## DEMOGRAPHICS ANALYSIS

Our goal this past year has been to increase enrollment, particularly among minority male students. Support for this goal is from the year ending 2000 in comparison to the 2001-year. The College has experienced success with minority enrollment up by 24% (2,135 students). Enrollment among minority males is up by 26% (908 students) and enrollment for minority females increased 23% (1,227 students). Similar improvements were reported last year when the 1999 and 2000 academic years were compared.

Among Hispanic students, enrollment increased 25% (943 students). There was a 31% increase in Hispanic males (943 students). For Hispanic females, the increase was 22% with 478 more students.

African American student enrollment increased 32% with 1,240 more students enrolled. For African American males, the enrollment increase was 38% (494 students) and for females, the difference was 30% (746 students).

**Two-Year Comparison – Minority Enrollment**

Year	African-Am Female	African-Am Male	African-Am All	Hispanic Female	Hispanic Male	Hispanic All	O Minority Female	O Minority Male	O Minority All
00	2,501	1,315	3,816	2,213	1,496	3,709	738	634	1,372
01	3,247	1,809	5,056	2,691	1,961	4,652	741	583	1,324
Difference	746	494	1,240	478	465	943	3	-51	-48
% Diff	30%	38%	32%	22%	31%	25%	0%	-8%	-3%

Year	Minority Female	Minority Male	Minority All
00	5,452	3,445	8,897
01	6,679	4,353	11,032
Difference	1,227	908	2135
% Diff	23%	26%	24%

## ACADEMIC ENHANCEMENTS & NEW PROGRAMS

- Writing Center, Dale Mabry Campus (1998)  
*-Provides writing assistance to student enrolled in any College course.*
- Eleven new technical certificate and degree programs (1999)  
*-In consultation with industry leaders programs were initiated such as Radio and Television Broadcast, Web Services Technology, and Telecommunications Engineering Technology.*
- eLearning  
*-Distance learning enrollment increased 40% in 1999 from its previous year.*
- International Education (1999)  
*-To meet the challenges of the marketplace, emphasis the position will stimulate and expand the College's curricula.*

- Apprenticeship: Plumbing, Pipefitting and HVACR, Plant City Campus (2000)  
*-Five-year program with graduates earning the designation of apprenticeship*
- International Aquaculture Program, Brandon Campus (2000)
- Dental Assisting Program  
*-In response to local employment demand and the needs of the community, this medical services program was developed*
- Child care center, Dale Mabry Campus (2000)  
*-On-campus facility for children of students and employees*
- Associate in Arts Transfer Center, Dale Mabry Campus (2001)  
*-Enables students seamless transfer to university of their choice*
- Dance program, Ybor City Campus (2001)  
*-Enables performing arts students to concentrate in dance and affords articulation to four year dance programs*
- Manufacturing Technology (2001)  
*-Opens doors to careers in aerospace, biomedical, micro-device, pharmaceutical, and thin-film optics industries.*
- FAMU/HCC Pharmacy
- HCC/University of Florida – Agriculture
- ENLACE – Engaging Latino Communities for Education  
*-Grant through a private foundation to encourage Latino students to continue their education. The grant is conducted in partnership with the Hillsborough County Schools and the University of South Florida.*

PRIVATE FUND RAISING EFFORTS (FOUNDATION)

The scholarship dollars raised by the Hillsborough Community College Foundation are shown below:

Scholarship funds for five years

Year	Scholarship funds raised
1997	\$124,935
1998	\$131,419
1999	\$131,679
2000	\$109,101
2001	\$210,600

In addition to dollars raised for scholarships, the Foundation made contributions to support the College by providing the funding for student support and academic initiatives. Contributions this past year came from private corporations and non-profit organizations such as Time Warner, Hillsborough Education Foundation, and Beers Construction.

Total institutional support for five years

Year	Institutional support funds
1997	\$131,106
1998	\$139,956
1999	\$155,581
2000	\$350,471
2001	\$498,504

STAFF DEVELOPMENT

- Technology (1999)  
*-Computer training at every skill level to enhance job performance.*
- All College Day (2001)  
*-Professional development day for all College employees with a menu of diverse workshops*
- Funds were made available to all faculty and staff for tuition reimbursement, conference attendance, guest speakers, etc.